

Introducing Kingsway Solar

Stage One Consultation

Kingsway Solar is a proposed solar farm and battery storage project to be located on parcels of land around the areas of Balsham, West Wrating, Weston Colville, and Weston Green in Cambridgeshire. It will also include an approximate 14km Grid Connection to National Grid's planned Burwell South substation, to be located to the south of the existing substation at Burwell.

We're consulting for six weeks on our proposals from **Thursday 31 October to Thursday 12 December 2024**.

We encourage you to read the information on display today and speak to the project team to ask any questions you may have about the proposals.

Kingsway Solar would...



Generate around 500 Megawatts (MW) of electricity, enough to power approximately 175,000 homes. This is roughly the equivalent of powering Huntingdonshire, Cambridge and Bury St Edmunds.



Enhance biodiversity and local ecology.



Generate renewable electricity to support the transition to Net Zero and the UK's ambition to be increasingly self-sufficient in energy.



Provide opportunities for local communities and the local economy.



We would like to hear what's important to you as we develop our plans.

Please share your views with us
by completing a feedback form.

About us

Kingsway Solar is being developed by Downing Renewable Developments (DRD).

DRD was founded by Downing LLP (Downing) to deliver solar, battery storage, and onshore wind projects across the UK and Europe. Downing has over a decade of extensive experience in owning and operating renewable energy, battery storage, and other infrastructure.

Why are we consulting?

The way we produce our energy is evolving. As the demand for electricity continues to grow, there is an urgent need for affordable and reliable energy sources to be developed. Solar farms support the UK's needs by reducing carbon emissions and the demand for imported and domestic fossil fuels.

Our search for a suitable solar farm location was primarily driven by the need to find opportunities for connecting to the national grid, which are limited to certain regions in the UK. By 2030, National Grid need to build five times the amount of infrastructure they have in the last 30 years.

In this case, a planned new substation at Burwell was identified as a suitable grid connection opportunity. This was the starting point that led to careful consideration of site options, based on a range of key factors, including environmental quality, land characteristics and access to transport routes.

We are now in the very early stages of designing Kingsway Solar and are consulting the local community to hear your views on all aspects of the proposals as we start to develop our plans and an initial design.

Project Programme

2023**September**

Initial Local Planning
Authority Meetings
Initial PINS meeting

October

Winter surveys

December

Local Planning Authority
briefings

2024**October**

Local Planning
Authority briefings

Stage one
consultation begins

December

Stage one
consultation ends
Environmental Impact
Assessment Scoping Report
submission

2025**Spring**

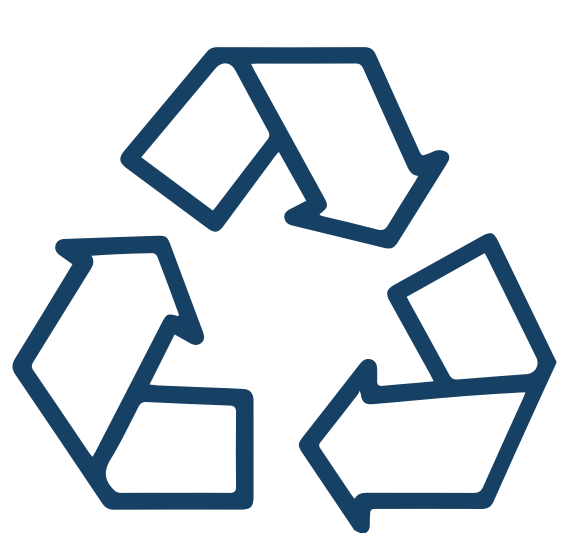
Stage two consultation

Winter

DCO submission

Our commitment to **you**

We are developing Kingsway Solar in line with the following design principles:



Sustainability

Designed to support the transition to Net Zero and assist the UK in achieving Net Zero targets by 2050.



People

Meaningful engagement with communities and stakeholders to understand how best to protect and enhance their environment and the local area.



Environment

Manage, protect and, where possible, enhance the landscape and design the Site sensitively with consideration to the local heritage, culture and in support of its ecological value.

Benefits to the Community

Building a relationship with the community is important to us.

We want to work with the local community to explore the ways in which Kingsway Solar can better support local projects and initiatives.

We would like your feedback on suggested community benefits packages and how these could be managed – such as through the local council or a trust. Examples from our other projects:

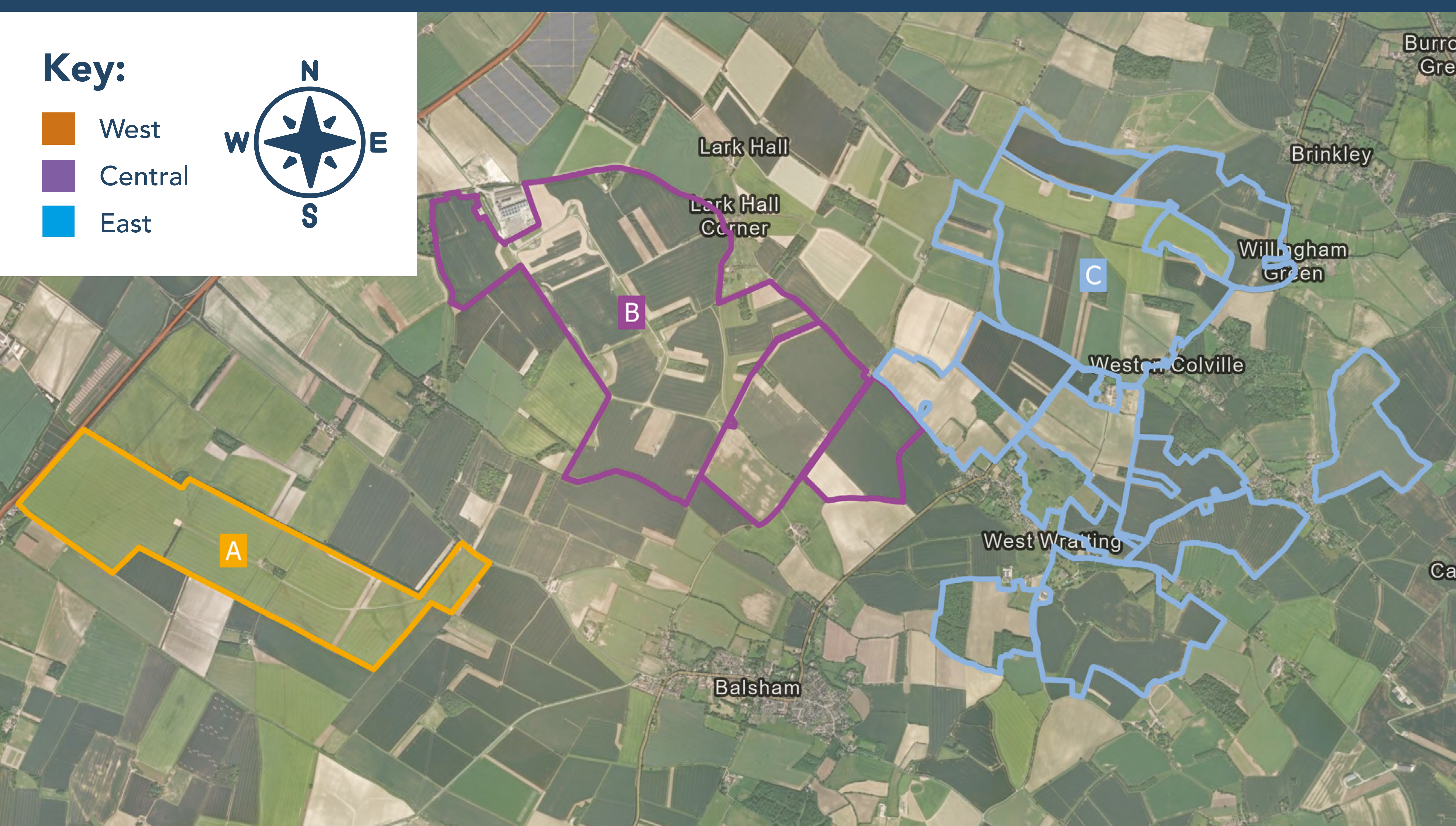
- Providing rooftop solar installations
- Installing Electric Vehicle charging points
- Providing Permissive Paths for walking and recreational use
- Creating science, technology, engineering, and mathematics (STEM), apprenticeship and employment opportunities

Kingsway Solar proposals

We are exploring a site of around **1,500 hectares (3,700 acres)** over **three land parcels**.

The land in the project would include the development of the solar panels and related infrastructure, including connections between panel areas and the national grid, areas reserved for the potential environmental mitigation and enhancement zones, recreational areas and community benefit initiatives.

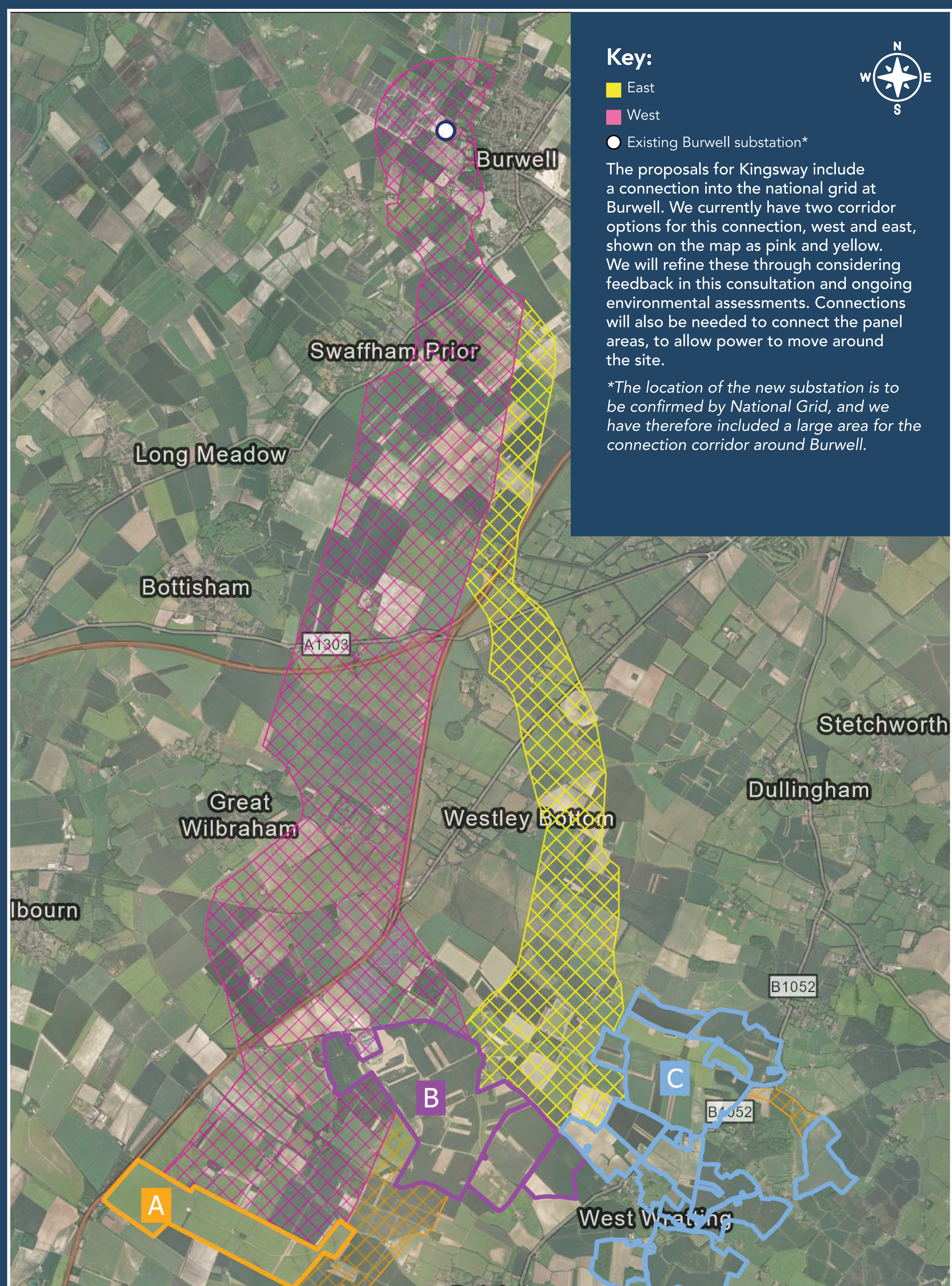
These land parcel options at this site have been carefully considered based on a number of key factors. While we have already undertaken a range of surveys, we will continue to carry out further studies and assessments to better understand the environmental characteristics of the site and the surrounding area, which will help guide our design.



The Connection Corridors

We are exploring different options for **connecting the solar farm into National Grid's planned new Burwell South substation**, to be located south of the existing substation at Burwell.

So far, we have identified and mapped two corridor options for this connection, east and west, shown in the map as yellow and pink, respectively.



We will continue our appraisal of these options, taking into account any feedback received through this consultation.

Our proposal currently assumes that we will connect to the grid via an overhead line. This would likely be lattice towers carrying 400 kilovolt (kV) lines. We may investigate placing infrastructure underground if required to mitigate impacts.

Protecting and enhancing the environment

The environment is a key consideration informing how we design the project. We want to find opportunities to both enhance the environment and minimise and/or mitigate any negative impacts.

Some of the **key environmental matters** that we are investigating include:



Agricultural land
and soils



Air quality



Climate change



Heritage and
archaeology



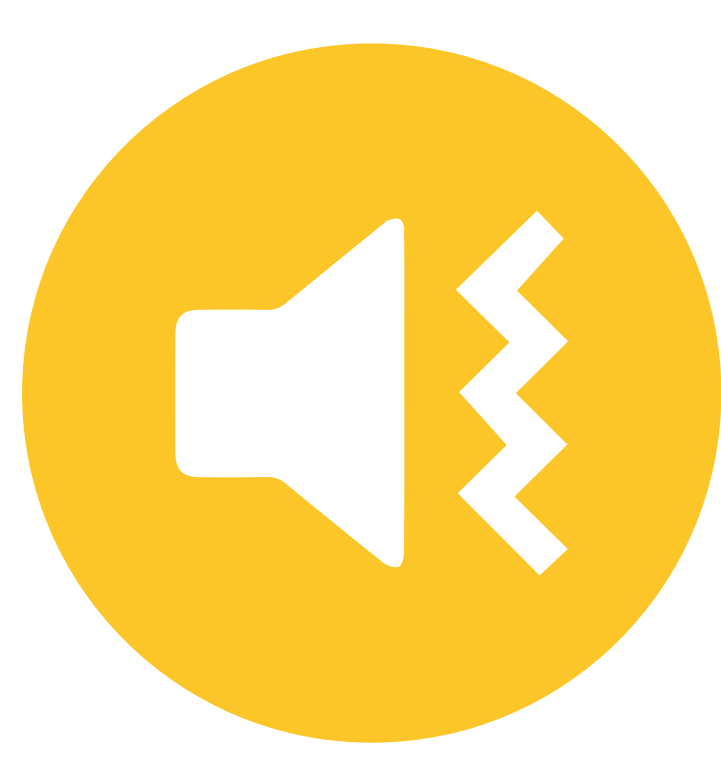
Glint and glare



Ecology and
biodiversity



Landscape and
visual amenity



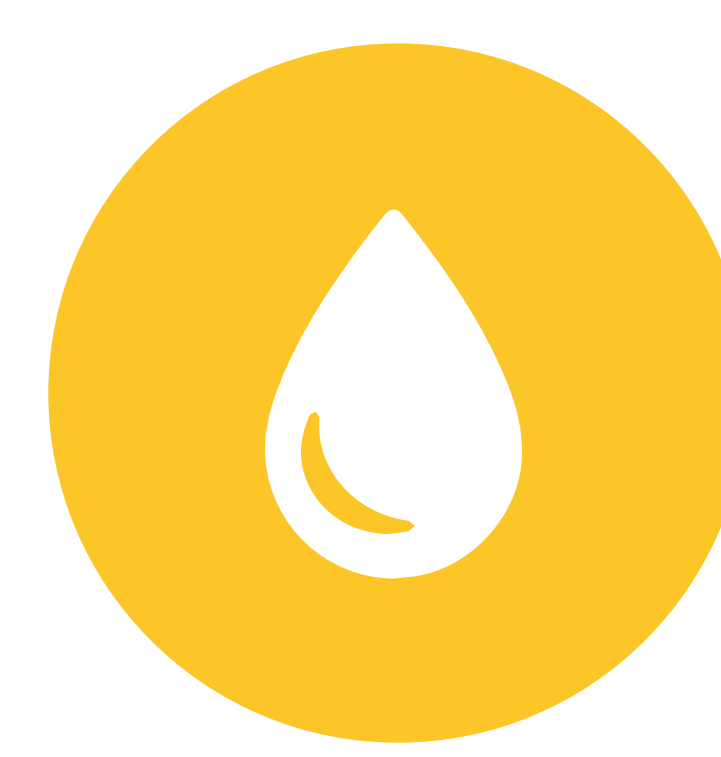
Noise and
vibration



Socioeconomics
and health



Traffic and
transport



Water bodies
and hydrology

Our approach to the environment

Agriculture - We understand that the protection of agricultural land is an important concern. We are completing an independent Agricultural Land Classification survey to assess the quality of the land within the site and its surrounds.

Wildlife - We are exploring opportunities to protect, retain and manage existing areas and features of environmental significance within the site.

Biodiversity - We are also aiming to achieve Biodiversity Net Gain (BNG) through the Scheme. BNG is a way of creating and enhancing natural habitats, and it is a prominent theme in UK infrastructure development.

We would like your feedback on what environmental mitigation or biodiversity enhancements can be implemented to ensure that we make improvements to biodiversity net gain above and beyond the government stipulated targets.

What is the **consultation** and **consent** process?

Solar projects with a generating capacity of over 50 MW, like Kingsway Solar (500MW), are classified as Nationally Significant Infrastructure Projects (NSIPs) under the Planning Act 2008.

We will therefore apply to the Secretary of State for Energy Security and Net Zero for a Development Consent Order (DCO) under the Planning Act 2008. An Examining Authority, appointed by the Secretary of State, will examine the application, including the use of a number of public hearings, and make a recommendation to the Secretary of State, who will then decide whether the Scheme should be approved.

While the decision sits with the Secretary of State, the views of community members, local authorities and other interest groups will be carefully considered during the DCO examination. You will have regular opportunities to formally provide these views including during both stages of consultation and formal examination processes.

- **Stage one – Non-Statutory Consultation, Autumn 2024 (this round)**
- **Stage two – Statutory Consultation, Early 2025**

Consultation plays a crucial role in shaping our proposals. We value the local insights provided in your responses and, where appropriate, will aim to incorporate them into our plans. As part of our stage two statutory consultation, we will also publish a Statement of Community Consultation (SoCC) outlining how the local community can get involved.



Kingsway
Solar

Have **your say** on Kingsway Solar

We want to hear **your views** on the proposals

You can provide feedback by:

- Completing our feedback form online at **www.kingswaysolarfarm.co.uk**
- Completing a hard copy feedback form and returning it to **FREEPOST DOWNING KINGSWAY**
- Submitting your comments or completed form by email to **enquiries@kingswaysolar.co.uk**

Our consultation documents, and an online version of this newsletter, are available on our website **www.kingswaysolarfarm.co.uk**

Get in touch

Email: enquiries@kingswaysolar.co.uk

Freephone: 0800 012 9881

Post: FREEPOST DOWNING KINGSWAY



Provide your feedback by scanning the QR code below and completing a feedback form online