

Kingsway Solar Farm

Stage One Consultation Webinar
December 2024



Agenda

1. Housekeeping
2. Introductions
3. About Downing
4. The need for solar
5. About Kingsway Solar
6. Next steps
7. Q&A



Meet the team

INTRODUCTIONS

David Vernon

Head of NSIP Projects

David Walker

Planning

Tom Warren

Communications



ABOUT DOWNING

Who is Downing LLP?

Downing LLP is a London-based investment manager making investments that matter.

Downing is a certified B-Corporation focused on creating a sustainable future through investing in sectors such as renewable energy, infrastructure, property and healthcare.

Downing Renewable Developments LLP (DRD) was founded by Downing and has over a decade of extensive experience in owning and operating renewable energy, battery storage, and other infrastructure.

Kingsway Solar Farm Ltd is a wholly owned subsidiary of Downing LLP and will be the applicant in the Development Consent Order (DCO) application.



Irwood Solar, operated by DRD since 2020

The UK Solar Situation

Do we need more solar farms?



The way we produce our energy is evolving.

As the demand for electricity continues to grow, there is an urgent need for affordable and reliable energy sources to be developed, including solar.

Solar farms support the UK's needs by reducing carbon emissions and the demand for imported and domestic fossil fuels.

In the next 7 years, National Grid need to build 5 times the amount of infrastructure they have in the last 30.

Do we have enough sun?



Solar works well everywhere in the UK. Solar panels don't need direct sunlight to operate, and they produce power all year round.

The government aims to triple solar to achieve net zero by 2030 and deliver clean, reliable and secure energy.

Solar vs Food



The independent National Food Strategy Review shows that solar farms do not in any way present a risk to the UK's food security.

Solar farms currently occupy less than 0.1% of the UK's land.

To meet the government's net zero targets, solar farms would account for approximately 0.4-0.6% of UK land.



An introduction to Kingsway Solar Farm





Nationally Significant Infrastructure Project (NSIP)

Solar projects with a generating capacity of over 50 MW, like Kingsway Solar, are classified as NSIPs under the Planning Act 2008.

As an NSIP, approval for Kingsway Solar must be secured by applying to the Secretary of State for Energy Security and Net Zero for a DCO.

The Secretary of State will appoint an Examining Authority who will examine the application and make a recommendation to the Secretary of State who will decide if the Scheme should be approved.

The process is independently managed by the Planning Inspectorate (PINS) and the views of community members, local authorities and other interest groups will be carefully considered during examination of the DCO, and everyone with an interest will have frequent opportunities to formally provide views including during non-statutory consultation, statutory consultation and the formal examination process.



INTRODUCING KINGSWAY SOLAR

Project Overview

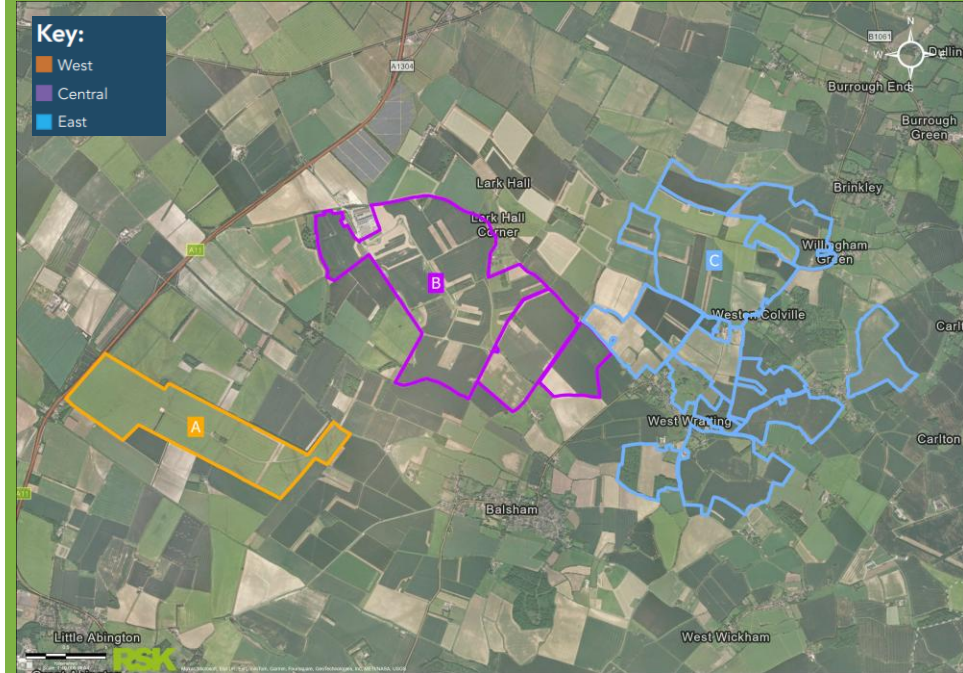
Kingsway Solar is a proposed solar farm and battery storage project to be located on parcels of land around the areas of Balsham, West Wratting, Weston Colville, and Weston Green in Cambridgeshire.

- Kingsway Solar would have the potential to supply around 500 Megawatts (MW) of electricity to the National Grid.
- The proposed development will also include an approximate 14km Grid Connection.
- Kingsway Solar would power approximately 175,000 homes, roughly the equivalent of powering Huntingdonshire, Cambridge, and Bury St Edmunds.



Land parcels

- We have identified what we now believe to be the most appropriate land within the local area and have developed our proposed red line boundary.
- The changes in land present an opportunity to enhance the flexibility of Kingsway Solar while maintaining its overall generating capacity.
- We'll be able to minimise and mitigate (where possible), potential impacts on the surrounding environment, ensuring that we can develop the project sustainably and effectively.



The Connection Corridor

We are exploring options for connecting the solar farm into a new National Grid substation to be located south of the existing substation at Burwell (to be named Burwell South).

- We currently have two corridor options for this connection, east and west.
- We will refine these through considering feedback received to this consultation and ongoing environmental assessments.
- Grid connections will also be needed to connect the panel areas, to allow power to move around the site.



Why this Site?

Our search for a suitable solar farm location was driven by the need to find opportunities for connecting to the national grid, which are limited to certain regions in the UK.

In this case, a planned new substation at Burwell was identified as a suitable grid connection opportunity.

Further studies and assessments are being undertaken to better understand the environmental characteristics of the site and the surrounding area, which will help guide our design.

Key criteria for Kingsway Solar Farm's location:

- 1 Grid connection opportunity
- 2 Environmental characteristics of the site
- 3 Willing and engaging landowners
- 4 Established transport links and access
- 5 Opportunities to protect and enhance local amenity and biodiversity
- 6 The site is not designated as green belt



The site selection process and methodology for Kingsway Solar will be examined by the Planning Inspectorate.



Project Programme

2023

SEPTEMBER

Initial LPA meeting
Initial PINS meeting

OCTOBER

Winter surveys commence

DECEMBER

SCDC and CCC briefings

2024

OCTOBER

ECDC, SCDC and CCC briefings
Stage one consultation begins

NOVEMBER

Stage one consultation
In-person events
Information webinar

DECEMBER

Stage one consultation ends
Environmental Impact Assessment
Scoping Report submission

2025

SPRING

Stage two consultation

WINTER

DCO submission



Design Principles



Sustainability

Designed to support the transition to Net Zero and assist the UK in achieving Net Zero targets by 2050.

Our design will be flexible to take advantage of new sustainable and efficient technologies that emerge.



People

Meaningful engagement with communities and stakeholders, working with local communities to understand how best to protect and enhance their environment and the local area.



Environment

Managing, protecting and, where possible, enhancing the landscape.

Designing the Site sensitively with consideration to the local heritage, culture and ecological value.



SITE BENEFITS

Biodiversity Net Gain

Kingsway Solar Farm provides an excellent opportunity for Biodiversity Net Gain to the local area.

We are exploring opportunities to protect, preserve and manage any existing areas and features of environmental significance within the Site.

Examples of how we will look to achieve BNG include:

- Creating new wildlife habitats, grasslands and wildflower meadows; and
- Employing measures such as the installation of Bee Hotels, log piles and bird and bat boxes.



SITE BENEFITS

Community Benefit Schemes

We are committed to supporting the communities living alongside our projects through community benefit schemes.

Building a strong relationship with the community is important to us and we are continually exploring ways to better support local initiatives.

We are seeking feedback on suggested community benefits packages and how these could be managed – such as through the local council or a trust.



NEXT STEPS

Next Steps

- 1 Thank you for attending this webinar
- 2 Please visit our website to read more about the project at www.kingswaysolarfarm.co.uk
- 3 Please complete our feedback form online at www.kingswaysolarfarm.co.uk. Your feedback will help inform the layout and refine the proposals for Kingsway Solar Farm



Thank you for your time

We now invite any questions you may have



Q&A



